



Features

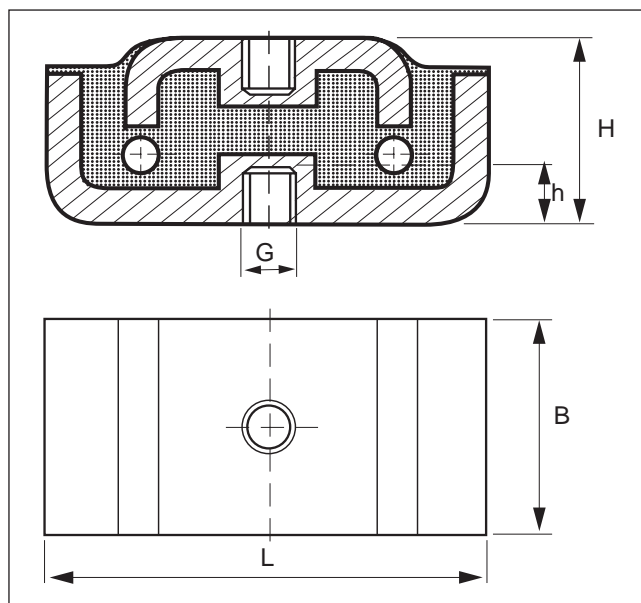
Type U is a robust element consisting of 2 solid U-shaped steel parts securely bonded to the rubber section. To achieve higher flexibility, two holes in the rubber are provided between the metals. The upper metal plate is fixed to the underside of the machine foot or baseplate by means of a bolt, while the bottom plate should be secured to the floor by an expansion bolt. For certain applications a dowel pin may be adequate.

Novibra® type U

Type U provides for a stable machine installation and is particularly suitable for the vibration isolation of heavier machinery with relatively high interfering frequencies.

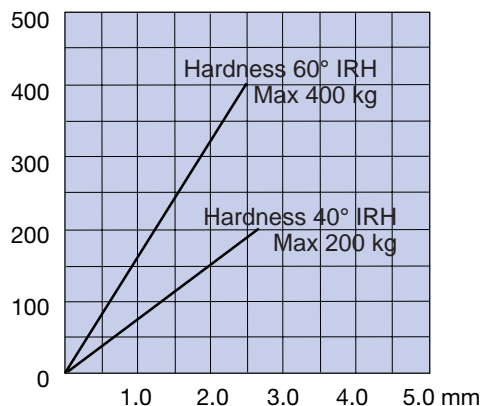
Typical applications can be found on:

- Presses
- Punches
- Weaving machines
- Woodworking machines
- Church bells
- Transformers
- Printing machinery
- Other heavy, high-speed machines



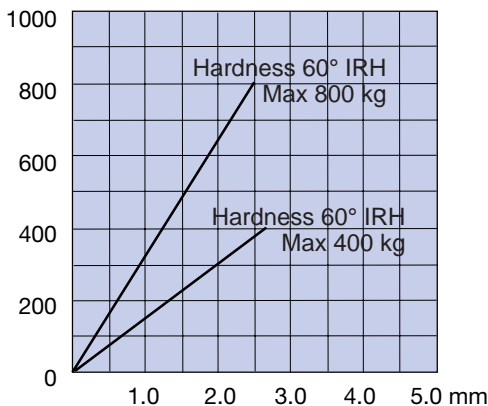
U 100

Load per mounting (kg)



U 130

Load per mounting (kg)



Type	Art.No.		Dimensions in mm				Weight (kg)	M-Max(kg)		
	40° IRH	60° IRH	B	L	H	h		40° IRH	60° IRH	
U 100	67363	67371	50	100	42	12	M12	0.650	200	400
U 130	67421	67439	70	130	54	12	M12	1.318	400	800